



Presses & Automation  
SINCE 1975



**AZ-MSF**  
**Mini Servo-Straightener Feeder**



## AZ-MSF

### Mini Servo Motorized Straightener & Feeder



- Workspace saving: Save up to 30% space compared to a traditional feed line
- Omron Servo Driven
- Pneumatic Pilot Release
- Up to 100 job storage
- Servo motorized Straightener & Feeder
- 4140 Steel rolls hardened to 58-64HRC
- Optional Sequential feeding
- Optional GAG Outputs based on sequence



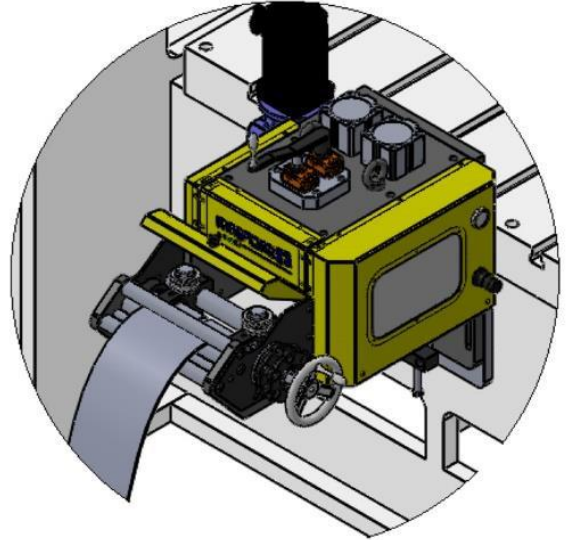


## AZ-MSF

### Mini Servo Motorized Straightener & Feeder

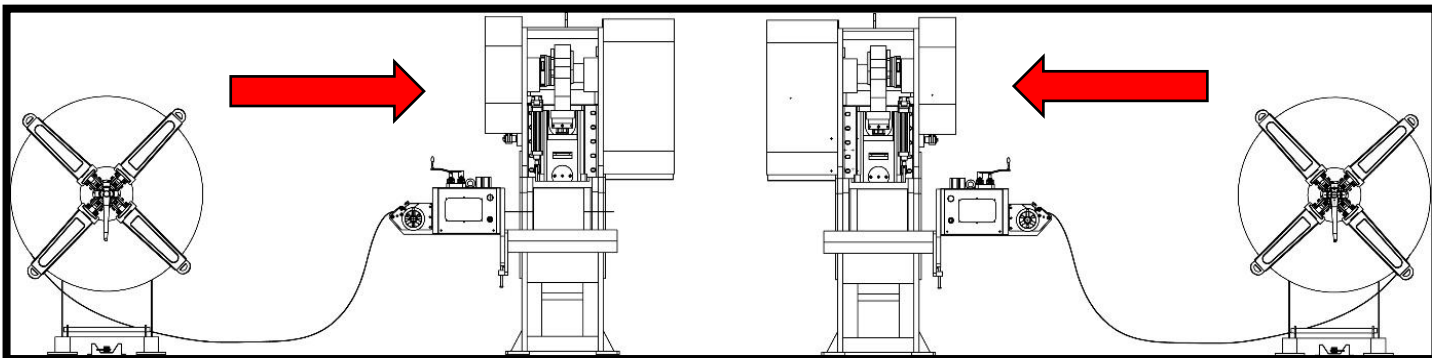


*Straightener adjustment made with handles. Mechanical readout for straightener*



*Traditional bolster plate mounting.  
Mounting plate included*

**Feed direction can be changed from right to left or Right to left**

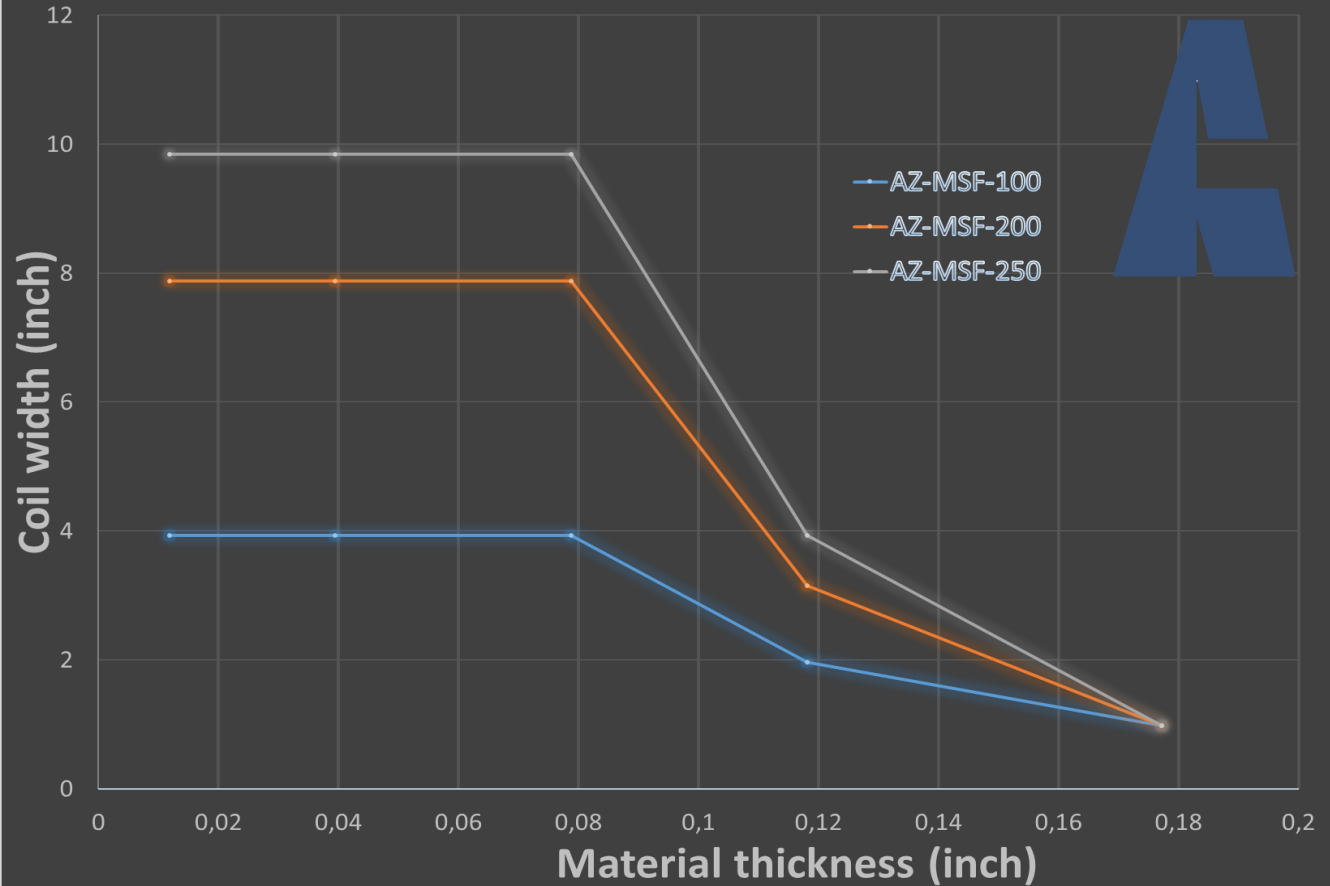




Model→ Parameter↓	Unit	AZ-MSF-100	AZ-MSF-200	AZ-MSF-250
<b>Min width</b>	INCH	<b>0,75</b>		
<b>Max Width</b>	INCH	3,88	7,875	9,875
<b>Thickness MIN</b>	INCH	0,012		
<b>Thickness MAX</b>	INCH	0,18		
<b>Pass-line</b>	INCH	Manual adjustment		
<b>Feeding rolls diameter</b>	INCH	3,150		
<b>Starighthener rolls diameter</b>	INCH	2,362		
<b>Straightener rolls configuration</b>		2 top 3 bottom		
<b>Pilot Release</b>		Pneumatic		
<b>Max speed</b>	inch/s	24,00		



## Straightening Capacities for AZ-MSF models



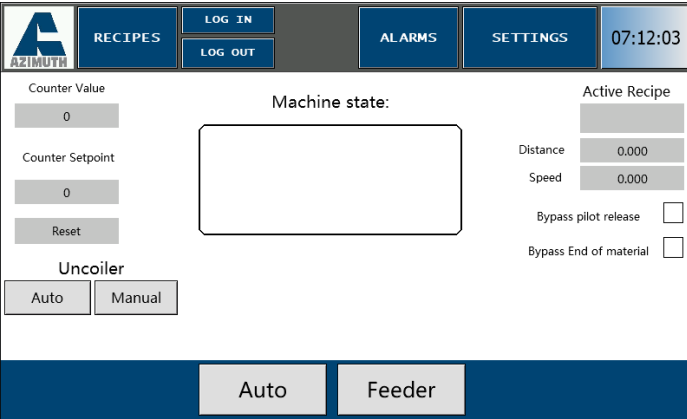
<b>THICKNESS (INCH)</b>	<b>AZ-MSF-100</b>	<b>AZ-MSF-200</b>	<b>AZ-MSF-250</b>
<b>0,01</b>	<b>3,9375</b>	<b>7,875</b>	<b>9,8125</b>
<b>0,04</b>	<b>3,9375</b>	<b>7,875</b>	<b>9,8125</b>
<b>0,08</b>	<b>3,9375</b>	<b>7,875</b>	<b>9,8125</b>
<b>0,12</b>	<b>1,9375</b>	<b>3,125</b>	<b>3,9375</b>
<b>0,18</b>	<b>1</b>	<b>1</b>	<b>1</b>

Straightener capacities represent maximum allowable material thickness at a certain width. Custom dimensions can be provided upon request.

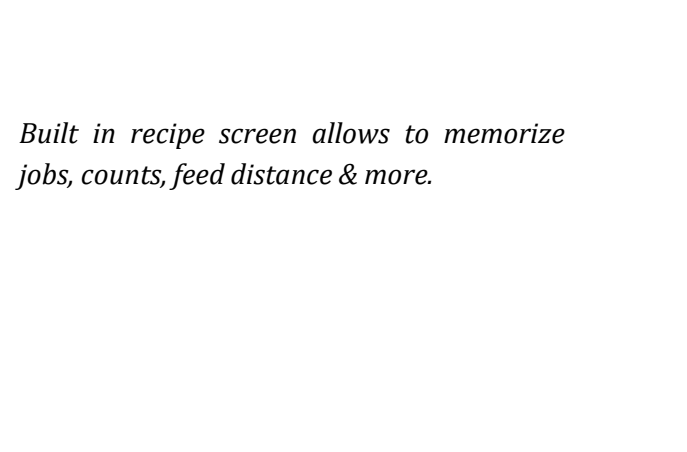




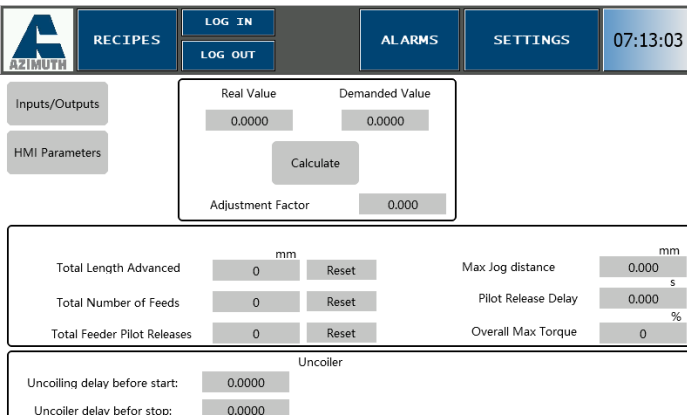
# Azimuth Feed interface



*Main screen allows you to monitor machine states, interface with your press & more.*



*Built in recipe screen allows to memorize jobs, counts, feed distance & more.*



*Maintenance screen give you access to calibrate servo & change parameters from main drive.*





# Advanced feed interface

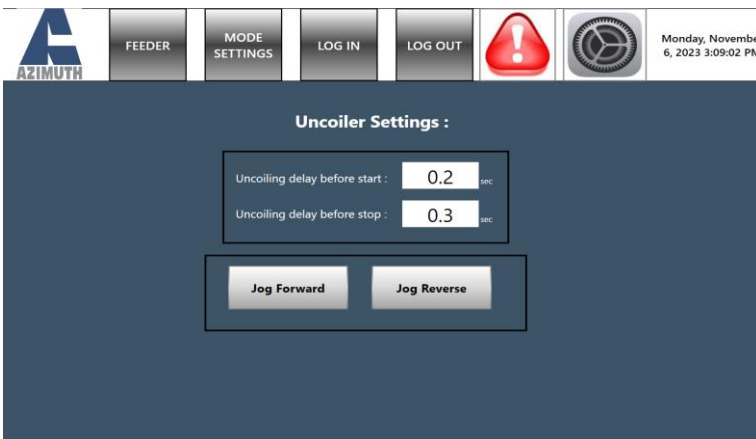
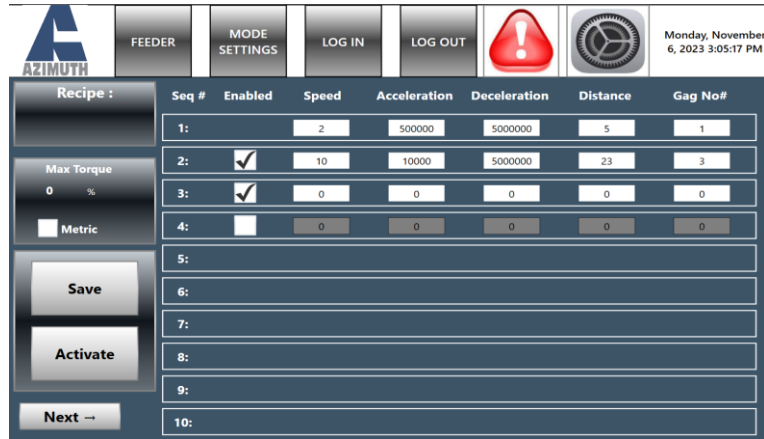
Our advanced feed interface allows you to store more jobs, sequential feed, GAG capabilities, & more!



*Up to 1000 jobs storage with search capabilities.*

*Each job can store up to 20 sequences with GAG outputs available.*

*Easily update sequence to your servo feeder from the sequential feed interface.*



*Complete your line with our uncoiler & control everything from the main screen. Our decoiler output controller allows you to set-up your loop delay easily with our built-in timer controller.*





## *Azimuth turnkey solution*

We specialized in complete turnkey press line solution & design, which allows our customer to provide us complete contract in integrating their press solution. We supply & manufacture;

**Presses**

**Tooling**

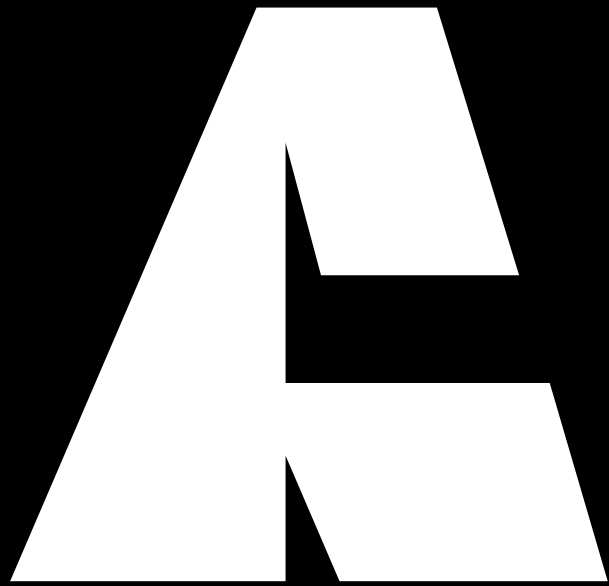
**Custom controller solution**

**Feed-line**

**Safety integration**







Presses & Automation