



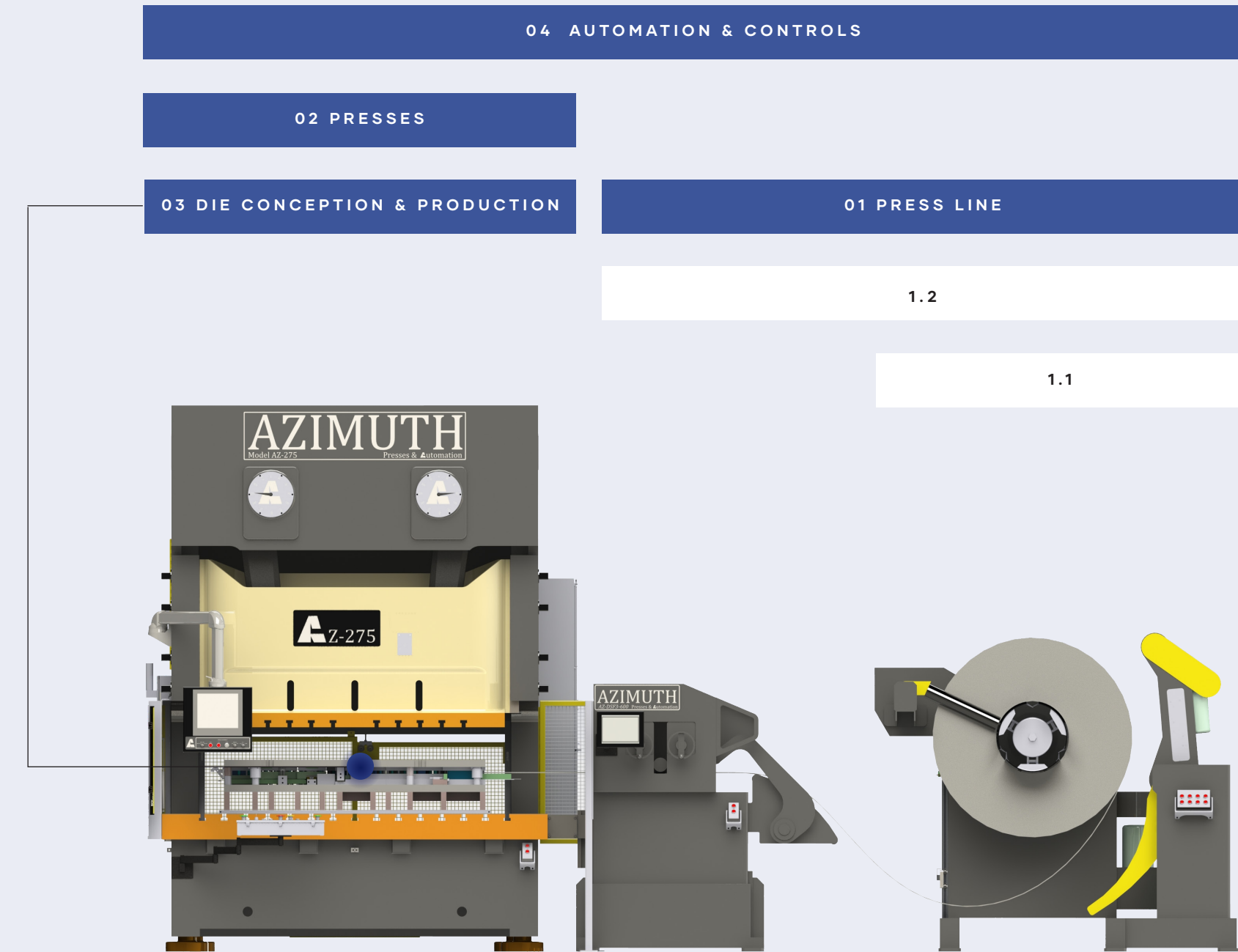
MACHINERY GUIDE

Custom build presses to suit your needs



TABLE OF CONTENT

01	Press Line (Auxiliary Equipment)	p.03
	1.1 Feeder	p.05
	1.2 2in1 Decoiler-Straightener	p.07
02	Presses	p.11
03	Die Conception & Production	p.25
04	Automation & Controls	p.27



01 PRESS LINE

01 AZ-S2-560 press line
02 Decoiler-straightener & Feeder



01

OUR OFFER

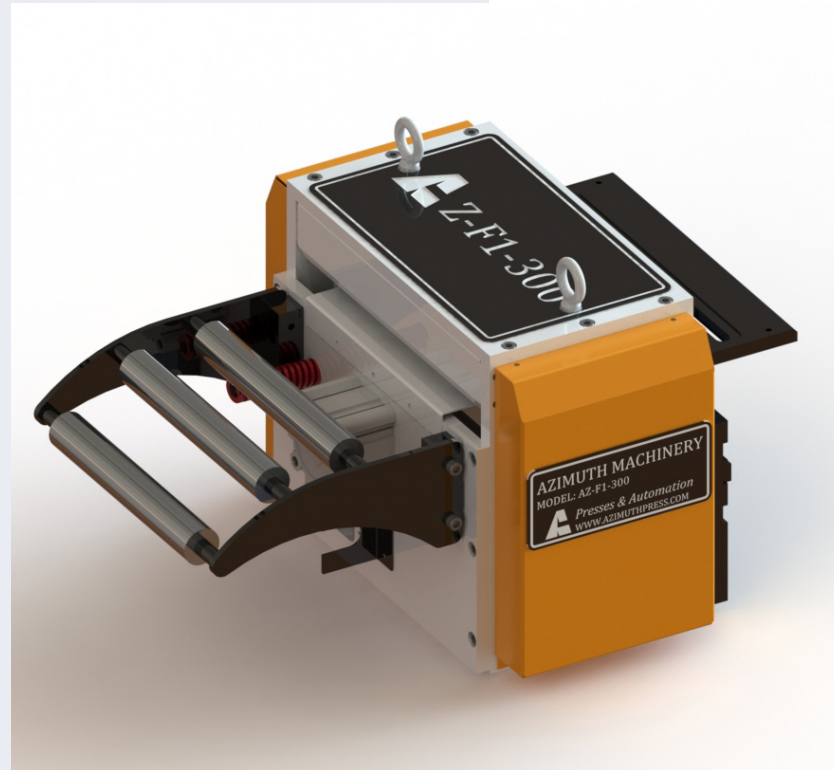


02

Azimuth Machinery supplies, install & build stamping equipment, including decoiler, steel straightener, coil feeders & complete line.

A complete line contains decoiler, straightener, and feeder parts, with possibility to include a shear and lubrication unit. All the pieces integrated into one servo control system. It has an accuracy straightening and feeding performance and also ensures the operation safety.

AZ-F SERVO FEEDER



Azimuth's servo feeders offer wide variety of width & thickness. Our SYSMAC Servo system (OMRON) offers an high end servo motorized application with build in safety features, an easy integration to your press equipment & a fully customizable HMI to your needs. Our servo systems can be modified to your needs depending on your application.

BENEFITS

- Pneumatic pilot release
- Remote control to JOG, Pilot release & manually feed
- 7" 4K HMI with several mode of operation
- (9 or 12" optional)
- Press before feed or Feed before press features
- Part counter outputs to stop press
- & more

OPTIONAL FEATURES

- Frame stand to floor mount
- Several voltage available
- Custom HMI or Enclosure

PARAMETER/MODEL	UNIT	AZ-F200	AZ-F300	AZ-F400	AZ-F600	AZ-F800	AZ-F1000
COIL WIDTH	inch	7 7/8	11 13/16	15 3/4	23 5/8	31 1/2	39 3/8
MOUNTING PLATE WIDTH	inch	13.8	17.7	21.7	29.5	37.4	45.375
OVERALL WIDTH	inch	18.5	22.4	26.4	34.2	42.1	52.1
THICKNESS	inch	0.01 - 0.25					
FEEDER ROLL DIAMETER	inch	3.55					
MAX SPEED	inch	20 inch / s*					

2 IN 1 DECOILER STRAIGHTENER



Azimuth's 2 in1 decoiler-straightener offer a compact unit with non-motorized decoiler with a motorized Straightener. Material is pulled through the straightener & is automatically fed to the servo feed with the loop sensing device.

BENEFITS

- Integrated design decoiler straightener
- Strong steel structure and reliable working performance
- Manual expansion decoiler shaft
- Maximum 3ton loading weight
- Non-motorized uncoiling process with Band brake
- Spring type leveling rollers pressing
- Four-point roller gap adjustment

OPTIONAL FEATURES

- Hydraulic Expansion
- Pressing arm system
- Custom HMI when purchased with Servo feed system

PARAMETER/MODEL	UNIT	AZ-DS2-200	AZ-DS2-300	AZ-DS2-400	AZ-DS2-500	AZ-DS2-600
MAX WIDTH	inch	7.87	11.81	15.75	19.69	23.62
THICKNESS MIN	inch	0.02				
THICKNESS MAX	inch	0.18				
MATERIAL I.D MIN	inch	17.72				
MATERIAL I.D MAX	inch	20.87				
MATERIAL O.D	inch	48.00				
COIL WEIGHT MAX	lb	1760.00	2200.00	2640.00	4400.00	5500.00
MAX SPEED (INCH/S)	inch/s	10.00				

3 IN 1 DECOILER STRAIGHTENER FEEDER



Azimuth's 3-in-1 Servo Feeder, Straightener and Uncoiler is accurate, built to handle a wide range of material width and thickness, and can reduce waste. The ergonomic design of our coil feeder system provides more efficient operation and enhanced capabilities to meet your specific press room needs.

BENEFITS DECOILER

- Hydraulic expansion from 17.75" to 20.875"
- Variable speed drive for uncoiler speed
- Pneumatic coil hold-down arm prevents material rebound and guarantees safe operation
- Adjustable coil guides assembly for stable uncoiling process and prevent coil movement
- Pneumatic coil hold-up arm for smoothly threading
- Pneumatic disk brake system
- Loop sensor for loop control

BENEFITS SERVO STRAIGHTENER-FEEDER

- Pneumatic swing arm for coil threading assist
- Self-centering coil guide rollers
- 7 Rolls of high-quality GCr15 straightening rollers, with bottom gear drive, up4/down3
- Worm gear adjustment of upper rollers with digital height adjustment
- Pneumatic upper rollers release (pilot release)
- Motorized pass line height adjustment +/-100mm
- Adjustable tailout support bracket for smooth delivery of material from the feeder to the press

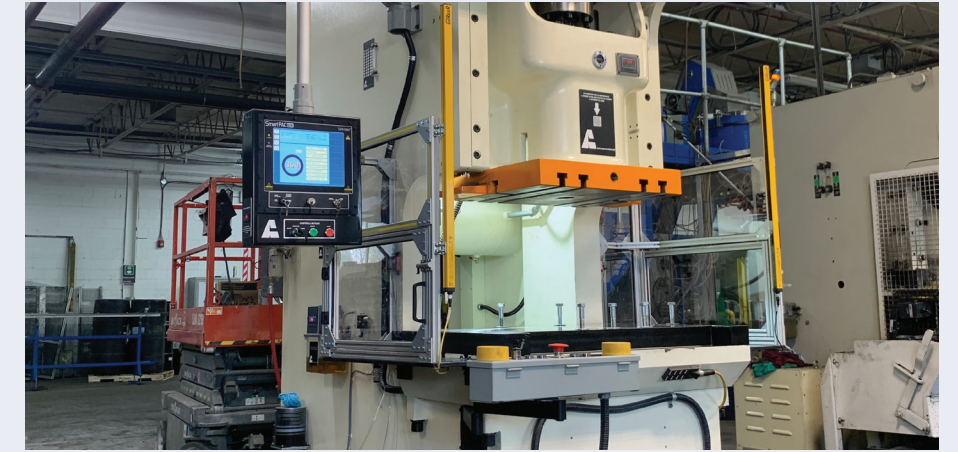
PARAMETER/MODEL	UNIT	AZ-DS2-200	AZ-DS2-300	AZ-DS2-400	AZ-DS2-500	AZ-DS2-600
MAX WIDTH	inch	7.87	11.81	15.75	19.69	23.62
THICKNESS MIN	inch	0.02				
THICKNESS MAX	inch	0.250				
MATERIAL I.D MIN	inch	17.72				
MATERIAL I.D MAX	inch	20.87				
MATERIAL O.D	inch	48.00				
COIL WEIGHT MAX	lb	1760.00	2200.00	2640.00	4400.00	5500.00
MAX SPEED (INCH/S)	inch/s	10.00				

OPTIONAL FEATURES

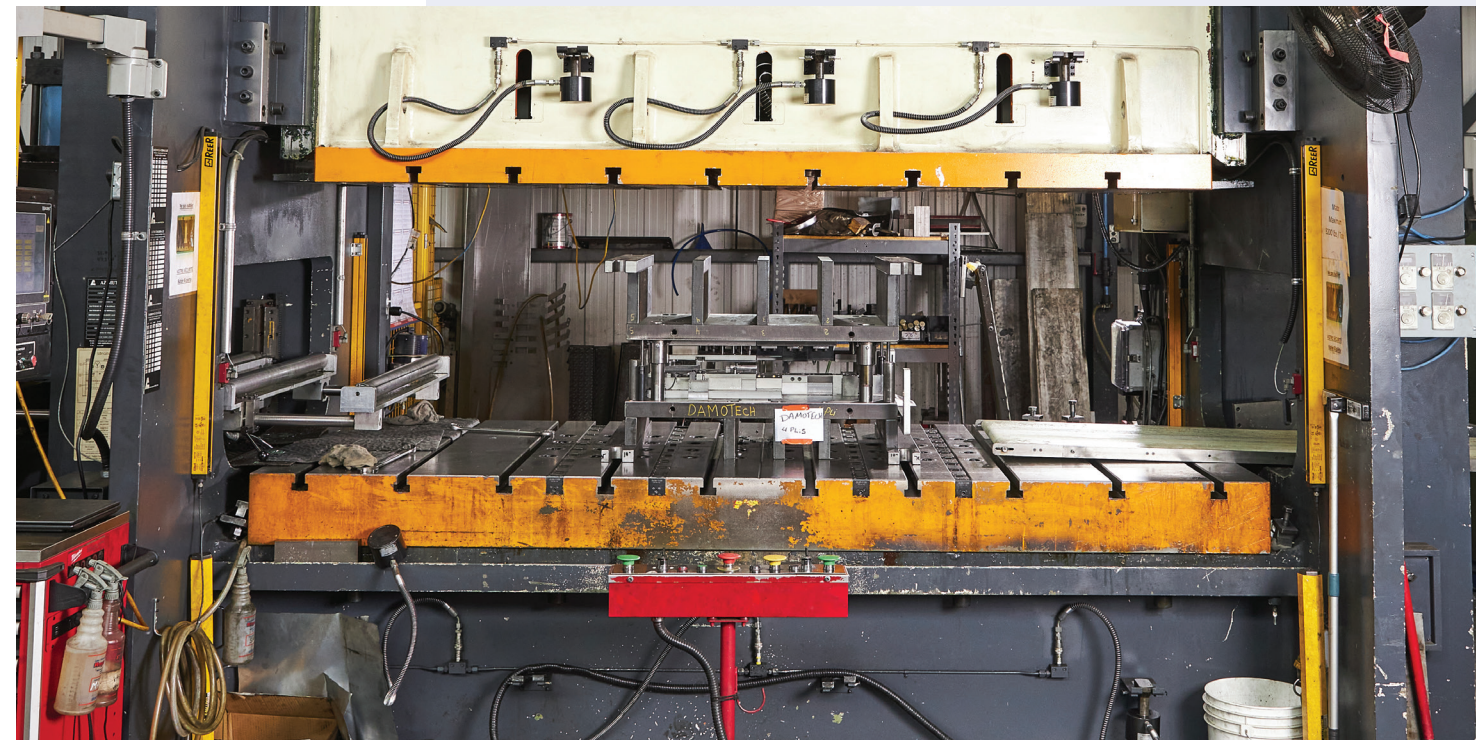
- Optional coil car for ease of operation
- Motorized coil guide adjustment
- Rubber for upper pinch roller
- Motorized straightening value adjustment
- Openable straightener upper rollers

PRESSES

OUR OFFER



02



01

- 01 Press AZ-S2-560
- 02 Press AZ1-175

All Azimuth's presses are manufactured &/ or assembled in our plant which increases our competitiveness in offering the best possible quality at the best possible prices. Azimuth keeps a wide range of replacement parts in inventory for all Azimuth clinching and air clutch presses as well as for Taloc and Alceco presses allowing us to provide fast and efficient after-sale services.

Our wide stock Inventory of press equipment allows us to offer a quick delivery service & the best possible customer experience.

AC MODEL



BENEFITS

- Welded steel frame
- Pneumatic clutch & brake units
- 4 points gibbing (6 points AZ60 & higher)
- 7 points automatic oiling system with low lube alarm
- Operator station with Dual-palm, E-stop & continuous cycle aviation (frame mounted)
- Dynamic brake time monitoring
- Solid state press control (Wintriss press control WPC1000 or WPC2000)
- Several modes of operation of the press (Single stroke, Inch, Continuous, Automatic single stroke & more)
- Hydraulic overload protection (AZ06 & Higher)
- Motorized shut height (AZ60 & higher)

OPTIONAL FEATURES

- Custom stroke & frame dimensions
- Custom drilling & machining
- Dual-palm T-stand
- Safety light curtain or/ & fix guarding
- Variable speed drive
- Digital die space readout
- Horizontal model
- Adjustable bed model
- Feeding system

AC Models are our direct drive system with Azimuth's air clutch. These presses are controlled by the Wintriss WPC1000/2000 press control. Most of our presses can be configured & design to your needs.

PARAMETER/MODEL	6-AC		10-AC		15-AC		22-AC		33-AC		44-AC
TYPE	S	L	S	L	S	L	S	L	S	L	S
NOMINAL CAPACITY	6		10		15		22		33		44
RATED TONNAGE BDC	0.062		0.09		0.09		0.125		0.125		0.125
SLIDE STROKE LENGTH	0.375	1.25	0.5	1.75	0.5	2	0.5	2.5	1	2.5	1
SPM (FIX)	275	190	190	155	190	140	170	135	130	100	120
MAX. DIE SET HEIGHT	5.625		6		7		7.5		8.5		9
DIE HEIGHT ADJUSTMENT	1.25		2		2		2.5		3		3
THROAT DEPTH	4.5		5.5		6		7.25		8.5		10
RAM DIMENSION	L x R	5.5	6.5	8		6.5	14	14			
	F x B	3.5	4.5	5.25		9.5	9	9			
SHANK DIAMETER	DIA	1.5									
BOLSTER SIZE	L x R	11	14	17		20	24	28			
	F x B	7	9	10		12	14	18			
FLOOR TO BED DIMENSION	39.5										
OVERALL SIZE	F x B	16	28.5	28.5		41.5	48	48			
	L x R	17	24.5	36		30.5	30.5	30.5			
	H	36	68	68		80	86	86			

SERVO S MODEL



Azimuth's new mini servo press S offers safety of operation, fastest press speed in the industry. Our all new press control from SYSMAC interface offers a wide possibility of operation & an easy way to integrate any equipment. With the adjustable stroke directly from the Servo interface, you can now run your press with a short stroke one day & longer stroke the other day. Shorter Stroke continuous (SSC) offers an high speed application when running short stroke application.

BENEFITS

- Programmable angle from the operator interface
- 7" 4K HMI with build in procedure
- 4 points gibbing
- 4 programmable CAM angle
- 4 dedicated Die protection
- Programmable Job (optional)
- Solid state press control (Wintriss press control)
- Several modes of operation of the press (Single stroke, Inch, Continuous, Automatic single stroke & more)

PARAMETER/MODEL		6-S	10-S	15-S	22-S	33-S
NOMINAL CAPACITY		6	10	15	22	33
RATED TONNAGE BDC		0.062	0.09	0.09	0.125	0.125
FULL STROKE LENGHT		1.25	1.75	2	3	3
STROKE LENGHT (FULLY ADJUSTABLE)		Up to 1.25	Up to 1.75	Up to 2	Up to 3	Up to 3
MAX SPM AT FULL STROKE						130
MAX DEGREES PER SECONDS		0				780
MAX. DIE SET HEIGHT		5.625	6	7	7.5	8.5
DIE HEIGHT ADJUSTMENT		1.25	2	2	2.5	3
THROAT DEPTH		4.5	5.5	6	7.25	8.5
RAM DIMENSION	L x R	5.5	6.5	8	6.5	14
	F x B	3.5	4.5	5.25	9.5	9
SHANK DIAMETER	DIA	1.5				
BOLSTER SIZE	L x R	11	14	17	20	24
	F x B	7	9	10	12	14
FLOOR TO BED DIMENSION		39.5				
OVERALL SIZE	F x B	S	28.5	28.5	41.5	48
	L x R	17	24.5	36	30.5	30.5
	H	36	68	68	80	86

AZ1 SINGLE POINT GAP PRESS

Our AZ1 models (Gap frame single point press) meets & exceed all the latest safety standard. This press is equipped with a variable speed drive, a fast acting hydraulic overload system that prevents bad set-up or parts stacking, WPC2000 press control (SmartPac PRO as an option) & more. With its motorized shut height adjustment with digital readout, it is now easier than ever to adjust the set-up of your tooling.



BENEFITS

- Wet clutch mechanism
- Automatic greasing system
- Several mode of operation
- WPC2000 press control with optional SmartPac PRO solution
- Fast acting hydraulic overload
- Timing & motion detection of the crankshaft

OPTIONAL FEATURES

- Custom frame - Extra shut height or deeper frame
- Custom bolster plate (burnout, t-slot, drilling)
- Custom drilling & machining
- Guarding system (light curtains, fix guarding, die guarding)
- Tonnage monitor
- Hydraulic clamping unit

Parameter	Dimension	Unit	AZ1-60		AZ1-80		AZ1-110		AZ1-140		AZ1-175		AZ1-220		AZ1-275		AZ1-340	
			S	L	S	L	S	L	S	L	S	L	S	L	S	L	S	L
Type			66		88		110		140		175		220		275		340	
Nominal Capacity		TONS	66		88		110		140		175		220		275		340	
Rated tonnage BDC		INCH	0.157	0.157	0.197	0.197	0.197	0.197	0.236	0.236	0.236	0.236	0.236	0.236	0.256	0.256	0.276	0.276
Slide Stroke Length (A)	A	INCH	3.150	5.512	3.937	6.299	3.937	6.299	4.331	7.087	5.118	7.874	5.906	8.661	6.299	8.661	6.299	8.661
SPM		SPM	60-115	45-85	55-100	40-75	55-100	35-65	50-90	35-65	35-70	30-55	35-65	30-55	30-55	20-35	30-55	20-35
Max. Die Set Height (B)	B	INCH	12.992	11.811	13.780	12.598	14.370	13.189	15.157	13.780	17.126	15.748	19.094	17.717	20.866	19.685	20.866	25.591
Die Height Adjustment		INCH	2.756		3.150		3.543		3.543		3.937		4.331		4.724		4.724	
MIN. Die set height (C)	C	INCH	10.236	9.055	10.630	12.598	10.827	9.646	11.614	10.236	13.189	11.811	14.764	13.386	16.142	14.961	16.142	20.866
Throat Depth (D)	D	INCH	10.630		12.205		12.992		13.780		15.748		16.929		17.717		17.717	
RAM DIMENSION	L x R	E	18.898		21.260		24.409		24.409		27.559		34.646		37.402		37.402	
	F x B	F	15.748		18.110		20.472		20.472		22.835		25.591		27.559		27.559	
Bolster Size	L x R	G	36.614		37.402		41.732		43.307		46.063		54.724		59.055		60.630	
	F x B	H	20.472		23.622		25.197		26.772		29.921		33.071		34.646		34.646	
Floor to Bed Dimension (I)	I	INCH	35.433		35.433		35.433		35.433		35.433		39.370		39.370		39.370	
Overall Size	F x B (J)	J	60.630		69.488		78.740		80.315		90.748		102.362		104.724		107.087	
	L x R (K)	K	47.244		47.244		51.181		51.969		55.906		60.630		64.567		66.142	
	H (L)	L	101.181		107.283		118.504		119.488		131.890		149.606		151.575		161.575	
Weight		lbs	11354		14220		19070		21054		29983		42329		51147		58643	

AZ2 DOUBLE POINT GAP PRESS



Our AZ2 models (Gap frame double point press) meets & exceed all the latest safety standard. This press is equipped with a variable speed drive, a fast acting hydraulic overload system that prevents bad set-up or parts stacking, WPC2000 press control (SmartPac PRO as an option) & more. With its motorized shut height adjustment with digital readout, it is now easier than ever to adjust the set-up of your tooling.

BENEFITS

- Wet clutch mechanism
- Automatic Greasing system
- Several mode of operation
- WPC2000 press control with optional SmartPac PRO solution
- Fast acting hydraulic overload
- Timing & motion detection of the crankshaft

OPTIONAL FEATURES

- Custom frame - Extra shut height or deeper frame
- Custom bolster plate (burnout, t-slot, drilling)
- Custom drilling & machining
- Guarding system (light curtains, fix guarding, die guarding)
- Tonnage monitor
- Hydraulic clamping unit

PARAMETER/MODEL	UNIT	AZ2-120		AZ2-175		AZ2-220		AZ2-275		AZ2-340	
TYPE		S	L	S	L	S	L	S	L	S	L
NOMINAL CAPACITY	tons	120		175		220		275		340	
RATED TONNAGE BDC	inch	0.197		0.236		0.276		0.276		0.276	
STROKE	inch	4.331	7.087	5.118	7.874	5.906	9.843	6.693	11.024	6.693	11.024
SPM	stroke/min	40-70	35-60	40-70	35-55	30-60	25-40	30-45	20-35	30-45	20-35
MAX. DIE SET HEIGHT	inch	17.126	15.748	19.094	17.717	21.654	19.685	23.819	21.654	23.819	21.654
DIE HEIGHT ADJUSTMENT	inch	3.543		3.937		4.331		4.724		4.724	
MIN. DIE SET HEIGHT	inch	13.583	12.205	15.157	13.780	17.323	15.354	19.094	16.929	19.094	16.929
THROAT DEPTH FROM RAM'S CENTER	inch	13.750		15.300		16.875		18.500		18.875	
BOLSTER SIZE	F x B	26.750		29.875		33		36.250		37	
	L x R	74		80.250		95.250		106.300		110.250	
RAM SIZE	F x B	20.500		22.875		25.500		27.500		27.500	
	L x R	55.125		59.063		72.875		82.625		82.625	
FLOOR TO BED DIMENSION	inch	35.500		35.500		39.375		43		43	
OVERALL SIZE	F x B	71.654		81.890		93.307		106.299		106.299	
	L x R	77.559		84.646		100.394		112.205		112.205	
	H	125.984		133.071		150.394		164.567		164.567	
WEIGHT	lbs	30800		41800		58300		77000		79200	

PRESSE AZ-S1



BENEFITS

- Wet clutch mechanism
- 6 points gibbing
- High rigidity frame
- Automatic greasing system
- Hydraulic overload system
- Wintriss press control (WPC2000 or SmartPAC PRO)

OPTIONAL FEATURES

- Custom frame - Extra shut height or deeper frame
- Custom bolster plate (burnout, t-slot, drilling)
- Custom drilling & machining
- Guarding system (light curtains, fix guarding, die guarding)
- Tonnage monitor
- Hydraulic clamping unit

With its high rigid steel frame, our AZ-S1 (Straight side single point) offers wide possibilities of application such as blanking, forming & more. This presse features precise slide guiding and frames designed to handle higher tonnage without the risk of angular deflection or yawning.

PARAMETER/MODEL		UNIT	AZ-S1-175		AZ-S1-220		AZ-S1-250		AZ-S1-340		AZ-S1-440		AZ-S1-560
TYPE			H	S	H	S	H	S	H	S	H	S	S
NOMINAL CAPACITY		tons	175		220		250		340		440		560
NOMINAL STROKE		inch	0.236		0.236		0.256		0.276		0.315		0.315
SLIDE STROKE LENGTH		inch	5.118	7.087	5.906	7.874	6.299	8.661	6.299	8.661	7.087	9.843	9.843
STROKE PER MINUTES (SPM)		spm	50-70	35-55	40-60	35-55	30-55	20-35	30-55	20-35	30-40	20-30	15-25
MAX. DIE SET HEIGHT		inch	16.732	15.748	18.701	17.717	20.866	19.685	20.866	21.654	25	23.622	25.591
DIE HEIGHT ADJUSTMENT		inch	4.331		4.331		4.724		4.724		4.724		4.724
MIN. DIE SET HEIGHT		inch	12.402	11.417	14.370	13.386	16.142	14.961	16.142	16.929	20.276	18.898	20.866
BOLSTER SIZE	F x B	inch	25.6		29.5		31.496		33.465		35.433		39.370
	L x R	inch	39.4		43.3		47.244		49.213		53.150		59.055
SIDE OPENING	F x B	inch	25.6		29.5		31.496		33.465		35.433		39.370
	HEIGHT	inch	13.8		16.5		16.929		18.898		20.472		25.591
SLIDE BOTTOM SIZE	F x B	inch	23.6		27.6		29.528		31.496		33.465		37.402
	L x R	inch	29.5		33.5		37.402		39.370		43.307		49.213
FLOOR TO BED DIMENSION		inch	35.4		39		42.520		42.913		42.913		42.913
OVERALL SIZE	F x B	inch	86.6		90.6		98.425		102.362		106.299		122.047
	L x R	inch	70.1		78.7		80.709		86.614		93.307		102.362
	H	inch	149.6		165.4		177.165		179.134		192.913		212.598

PRESSE AZ-S2



With its high rigid steel frame, our AZ-S2 (2 points straight side press) offers wide possibilities of application such as blanking, forming & more. This presse is designed for stamping relatively long, narrow parts at high single stroking rates or in continuous mode, using either blanks or coil stock; or for running progressive dies that need the longer bed area to accommodate long dies with multiple stations.

BENEFITS

- Wet clutch mechanism
- 6 points gibbing
- High rigidity frame
- Automatic greasing system
- Hydraulic overload system
- Wintriss press control (WPC2000 or SmartPAC PRO)

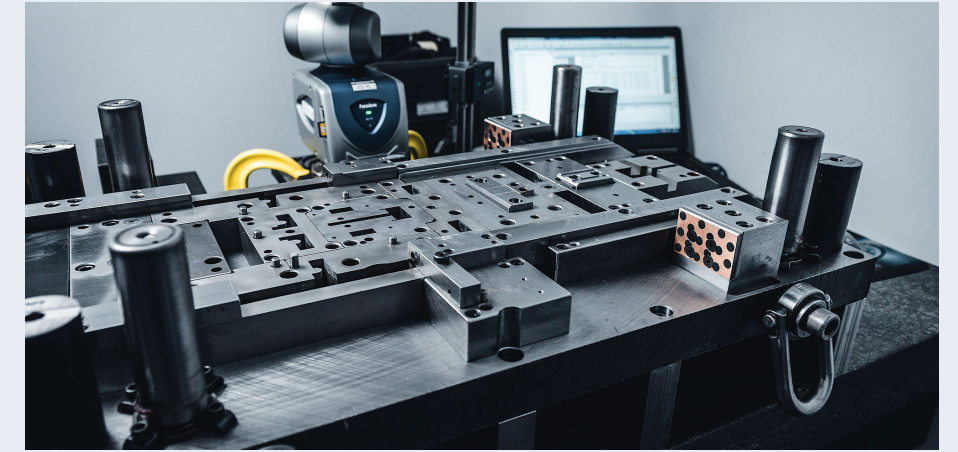
OPTIONAL FEATURES

- Custom frame - Extra shut height or deeper frame
- Custom bolster plate (burnout, t-slot, drilling)
- Custom drilling & machining
- Guarding system (light curtains, fix guarding, die guarding)
- Tonnage monitor
- Hydraulic clamping unit

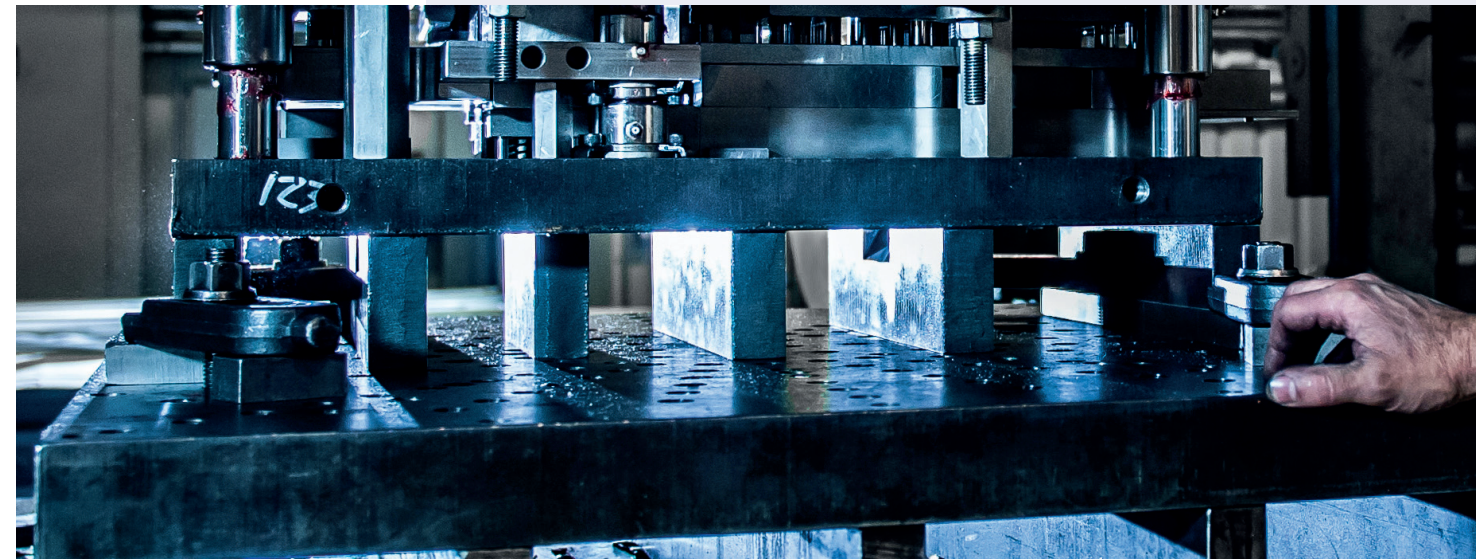
PARAMETER/MODEL		UNIT	AZ-S2-120		AZ-S2-175		AZ-S2-220		AZ-S2-250		AZ-S2-340		AZ-S2-440	AZ-S2-560
TYPE			S	L	S	L	S	L	S	L	S	L	L	L
NOMINAL CAPACITY		imperial tons	120		175		220		250		340		440	560
RATED STROKE (FROM BDC)		inch	0.197		0.236		0.276		0.276		0.276		0.315	0.315
SLIDE STROKE LENGTH		inch	4.331	7.087	4.331	7.874	5.906	9.843	6.693	11.024	6.693	11.024	11.811	11.811
PRESS SPEED		spm	40-70	30-60	40-70	30-45	30-60	25-40	30-45	20-35	30-35	20-35	15-25	15-25
SHUT HEIGHT MAX		inch	17.125	15.750	19.094	17.717	21.654	19.685	23.819	21.654	23.819	21.625	23.625	25.625
SHUT HEIGHT MIN		inch	13.582	12.207	15.157	13.780	17.323	15.354	19.094	16.929	19.094	16.929	18.504	20.472
BOLSTER SIZE	F x B	inch	27.56		29.92		35.43		39.37		39.37		43.31	47.24
	L x R	inch	64.96		70.87		86.61		98.43		98.43		106.30	118.11
SIDE OPENING	F x B	inch	25.59		31.5		35.43		37.4		37.4		43.31	43.31
	HEIGHT	inch	13.78		15.75		17.72		18.11		18.11		21.65	23.62
RAM DIMENSION	F x B	inch	23.62		27.56		31.5		35.43		35.43		39.37	43.31
	L x R	inch	53.15		59.06		74.8		86.61		86.61		94.49	106.30
FLOOR TO BED DIMENSION		inch	40.75		40.75		44.69		48.62		50.59		52.76	52.76
OVERALL SIZE	F x B	inch	80.71		94.49		104.33		114.17		118.11		124.02	133.86
	L x R	inch	94.49		102.36		124.02		135.83		135.83		145.67	165.35
	H	inch	135.83		155.51		168.5		188.98		192.91		216.54	236.22

03 DIE CONCEPTION & PRODUCTION

OUR
OFFER



02



01

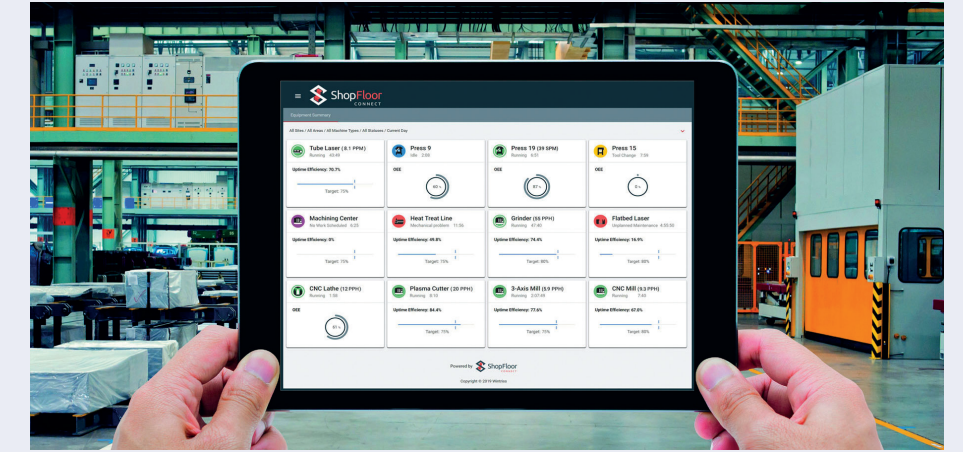
01 Die production for stamping
02 Die Conception & Assembly

An exclusive partnership with LPM

Thanks to our exclusive partnership with LPM, we are able to support you, from the simplest manual die to the most complex progressive one. LPM's designers have the experience required to make your project come true. If necessary, we can convert your files to make them compatible with as many systems as possible to facilitate future modifications. Each die is made with unparalleled precision due to our advanced 4.0 technology equipment.

04 AUTOMATION & CONTROLS

OUR OFFER



02



01

01 SmartPAC PRO Automation controls
02 Automation dashboard

We understand market challenges. This is what allows us to deliver the most efficient automation and industrial control products. Our reliable and durable products from well-known brands are a guarantee of quality and innovation. For more than 75 years, Azimuth Machinery has been a leading partner for parts purchasing or complete press line automation projects thanks to the vast expertise of its team.

WINTRISS WPC2000 PRESS CONTROL



The WPC 2000 Clutch/Brake Control is a feature packed, easy-to-use, dual microprocessor based clutch/brake control system for part revolution mechanical power presses. With its two independent microprocessor systems, the WPC 2000 provides diverse redundancy, for optimum clutch/brake control reliability and greater operator safety.

PRESS CONTROL FEATURES

- Interrupted stroke provision significantly improves pressroom productivity
- Internal brake monitor checks press-stopping performance
- 9 Customized status codes (including 2 cross-checked pairs) installed by user
- Micro-inch capability improves set-up
- Self-diagnostics identifies control problems
- Can be integrated with SmartPAC® 2 or SmartPAC PRO for greater ease of use
- 4-Output Programmable Limit Switch to control timing of ancillary equipment.
- Optional Auto-compensated Top Stop (ACTS) adjusts the top-stop angle automatically as press speed changes or the brake wears.
- Optional Shadow® light curtain provides point-of-operation guarding
- Optional Foot Switch, One-Hand Control, External Trip, Continuous-on-Demand and Bar Modes for maximum flexibility
- Optional Auxiliary E-Stop Relay Outputs for stopping or preventing from starting up to three auxiliary devices like a feed or a transfer if any e-stop button is pressed, any light curtain is interrupted or any cross-checked input is open.

MODE OF OPERATION

- Inch & micro-inch for die set-up
- Single stroke (Dual-palm & foot-switch)
- Automatic Single stroke
- Continuous & continuous on demand feature
- Azimuth Maintenance counter for maintenance monitoring

WPC2000 PRESS CONTROL WITH SMARTPAC PRO



The Wintriss SmartPAC PRO sets the standard for complete Press Automation Control. With a large 12 inch color touch screen, advanced communications, superior graphics, on-screen help at the touch of a button, and many performance enhancements.

CONTROL FEATURES

- The large, vibrant touch-screen enables efficient navigation and allows more information to be displayed.
- Advanced Job Storage - SmartPAC PRO's searchable Tool Manager can store an unlimited number of tool programs to accommodate even the busiest shops.
- The new Tool Summary Screen enables you to view the entire contents of each programmed setup on a single screen, provides a place for users to place notes for the job, and can be exported to a USB disk as comma-separated values.
- Users can create custom home screen dashboards to display the information they use most often. These dashboards can be named and saved in the favorites menu, and quickly recalled any time.
- Easy-to-access front panel external USB port for backing up tool number memory, capturing screen shots, attaching a bar code scanner, keyboard, mouse, or other USB devices.
- The new Options Manager allows users to add, enable, or disable firmware options without having to upgrade the SmartPAC PRO firmware. Simply enter an activation code, and the option will be initialized.

MAIN FEATURES & CAPABILITIES

- Run your SmartPAC PRO from your desktop PC or tablet with optional Remote Access.
- Messaging send messages via email to other networked SmartPAC PROs, Wintriss Tech Support, or any mobile device.
- Built-in backup and restore capability. You can save a copy of SmartPAC PRO 's setup memory and initialization settings on your network, and restore it when needed.
- Easier Firmware Upgrades - No chips to change when you add new features. SmartPAC PRO firmware can be upgraded through the built-in USB port.
- Built-in brake monitor tracks press stopping performance in both milliseconds and degrees of rotation, the latter being extremely helpful in determining the critical angle for die protection.
- SmartView press status from anywhere in the world
- Available On-Screen Help just press the «Help» icon on any screen.
- Enhanced Error/Event Log time stamped detailed information for 300 most recent errors/events.
- Enhanced Diagnostics status of inputs, resolver and more
- Easy to upgrade from SmartPAC 2! The SmartPAC PRO is only 1» wider and 1» taller than the SmartPAC 2. All of your existing optional PAC modules, resolver, DSI, cam outputs, and SFI connections go directly into SmartPAC PRO! In addition, all of your existing tool number setups can be transferred to the SmartPAC PRO. We're also offering a special upgrade program
- The Info Center option allows SmartPAC PRO to display video, setup sheets, PDFs, drawings, photographs, and other information right at the press.

MOTION CONTROL OR CUSTOM PLC PROGRAMMING

01 Custom Turntable
02 Custom Turntable

Azimuth's capabilities of achieving your next stamping project is simply out of the ordinary. We offer complete integration of servo system, custom PLC programming & custom machine design to suits your needs. Send us your requirements today, we'll do the rest.



01



02

