

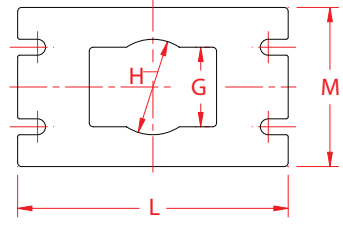
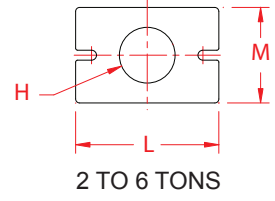
Model	No	2-IP	4-IP	6-IP	8-IP	10-IP	15-IP	22-IP	33-IP	44-IP	66-IP	88-IP		
Capacity	Tons	2	4	6	8	10	15	22	33	44	66	88		
Type		Bench	Bench	Bench	floor	floor	floor	floor	floor	floor	floor	floor		
RAM														
A	STANDARD STROKE	IN.	1	1¼	1½	1 ½	1¾	2	2½	2 ½	3	4	5	
B	PUNCH SHANK HOLE DIAMETER :	IN.	1	1	1½	1½	1½	1½	1½	1½	1½	2½	2½	
C	SIZE OF RAM FACE – LEFT TO RIGHT	IN.	2	2½	5 3/8	5½	6 ½	8	9 ½	14	14	17 ½	23	
D	SIZE OF RAM FAXE – FRONT TO BACK :	IN.	2	2½	3 3/8	3 ¾	4½	5 ¼	6 ½	9	9	14 ½	20	
BB	DIAMETER OF HOLE	IN.	●	●	7/16	½	9/16	21/32	11/16	13/16	13/16	13/16	1 1/16	
CC	DISTANCE BETWEEN HOLES :	IN.	●	●	4 ¼	4 ¾	5½	6½	8	10	10	15	15 1/8	
CCC	DISTANCE BETWEEN HOLES	IN.	●	●	●	●	●	●	●	●	●	6	11	
DD	DISTANCE BETWEEN HOLES	IN.	●	●	●	●	●	●	●	●	●	3 ½	17 ½	
DDD	DISTANCE BETWEEN HOLES	IN.	●	●	●	●	●	●	●	●	●	8	6	
	STROKES PER MINUTE :	SPM.	250	220	190	165	155	140	135	100	95	75	70	
CRANKSHAFT														
E	DIAMETER AT MAIN BEARING :	IN.	¾	1	1¼	1 ½	1¾	2 1/8	2 ½	3	3 ½	4 ¼	5	
F	DIAMETER AT CRANK BEARING :	IN.	2	2 ½	3	3 ½	4	4 ½	5 ½	5 5/8	5 5/8	6 ½	7 ½	
PRESS BED														
G	SIZE OF OBLONG OPENING IN BED	IN.	●	●	3½X5¼	4X6	4½X7½	5X8	6 X10 ¼	9X12	11X13	13X18	14X19	
H	SIZE OF ROUND OPENING IN BED	IN.	2 ½	3 ½	4 ½	5	5 ½	6	7½	10	12	16	17	
I	WIDTH OF OPENING THROUGH BACK :	IN.	3	4	6	7	8	10	12	14	14	16	20	
J	THROAT DEPTH – RAM CENTER TO FRAME :	IN.	3 ¼	4	4 ½	4 ¾	5 ½	6	7¼	8 ½	10	12¼	13½	
K	DISTANCE FROM BED TO GIBS	IN.	5	7	8	8¾	9¾	11½	13¼	14	15	18	23	
	RECLINES FROM UPRIGHT TO :	DEG.	0 to 36	0 to 36	0 to 36				10-20-30					
BOLSTER PLATE														
L	SIZE – LEFT TO RIGHT	IN.	7	9	11	12	14	17	20	24	28	32	36	
M	SIZE- FRONT TO BACK	IN.	5	6	7	8	9	10	12	14	18	22	25	
N	NORMAL THICKNESS	STANDARD	IN.	5/8	¾	7/8	1	1¼	1 ½	1 ½	1 ¾	2	2 ½	3
	T-SLOTS	IN.	●	●	●	●	●	●	●	2 ½	2 ½	3	3 ½	4 ½
DIE SPACE														
O	SHUT HEIGHT OVER BOLSTER (SDAU) ¹	IN.	3 ¾	5	5 ¾	6 ¼	6 ¾	8	9	9 ¾	10	11 ½	15	
P	MAXIMUM SHUT HEIGHT ADJUSTMENT :	IN.	1	1 ½	1 ½	1 ½	2	2 ½	3	3	3	3	3 ½	
PRESS DIMENSIONS														
Q	HEIGHT – FLOOR TO BED	IN.	5¼	6¾	7½	32	32	32	32	32	32	34	34	
R	HEIGHT – FLOOR TO CENTER OF CRANKSHAFT	IN.	16½	21	25¾	48	54¾	59¼	65¼	67	69	81	92	
S	OVERALL HEIGHT :	IN.	23	29	36	58	67	72	80	86	89	104	120	
TU	FLOOR SPACE – LEG PADS	IN.	7½x10	9¼X15	12X17	25X23½	24½X28½	28¼X36	30½X41½	30½X47½	32X52	38X64	60X85	
FLYWHEEL														
V	DIAMETER AND WIDTH OF FACE	IN.	10x2	13x2¼	16x2¾	18x3¼	21¼x3	23x4¼	26x4	34x5¾	35½x6¾	42x6¾	46x7	
NET WEIGHT														
	APPROXIMATE, NOT INCLUDING OPTIONS	LBS.	110	165	320	760	1200	1700	2500	3500	4600	8899	14000	

¹ Changes in stroke length and bolster plate thickness will affect shut height

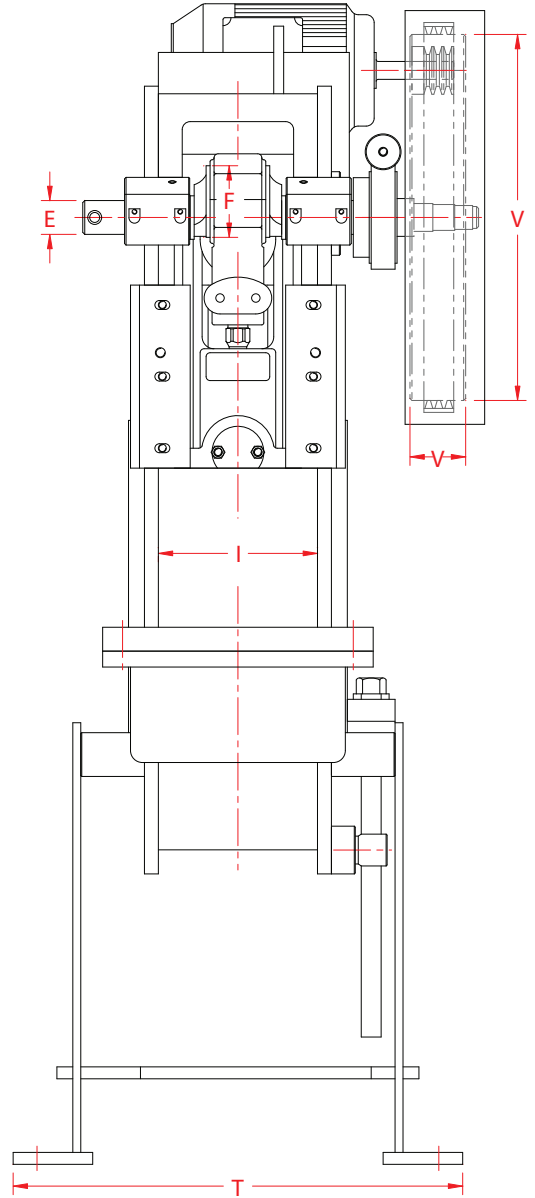
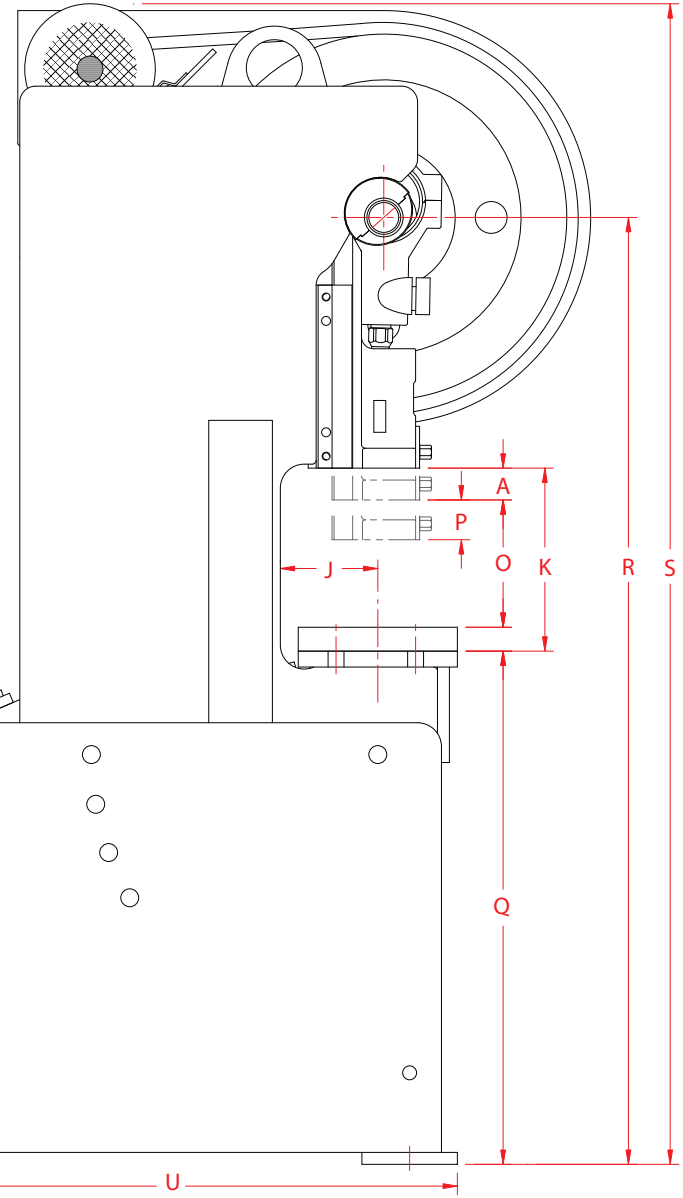
BOLSTER
PLATE

HOLE IN BOLSTER:
ON REQUEST

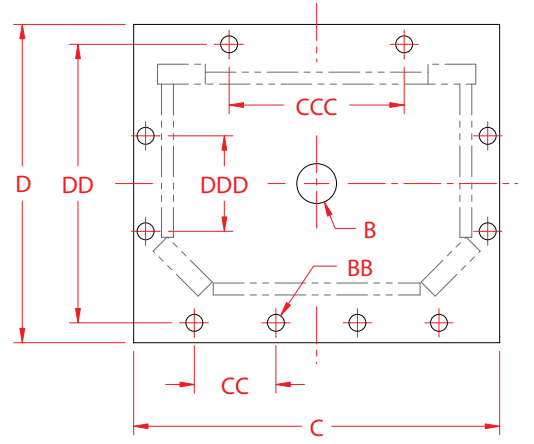
BED
PLATE



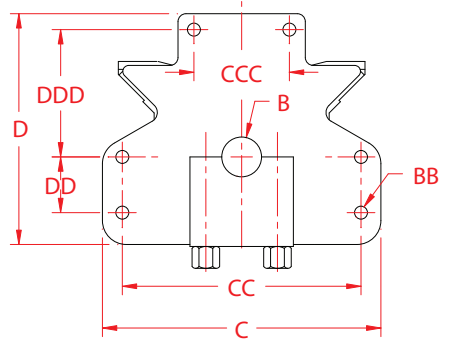
OBI PRESS
OPEN BACK INCLINABLE



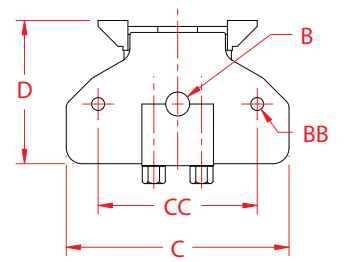
RAM



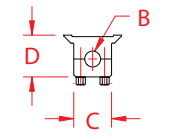
88 TONS



66 TONS



6 TO 44 TONS



2 AND 4 TONS